

KQi200 SERIES



YOUR LAST MILE **IN STYLE**

MAIN FEATURES



**Dual-Tube
Suspension**



Foldable Handlebar
(KQi 200F Only)



**Sleek Design
+ Swappable Griptape**



Upgraded Motor



Extended Range



Be Safe, Be Seen

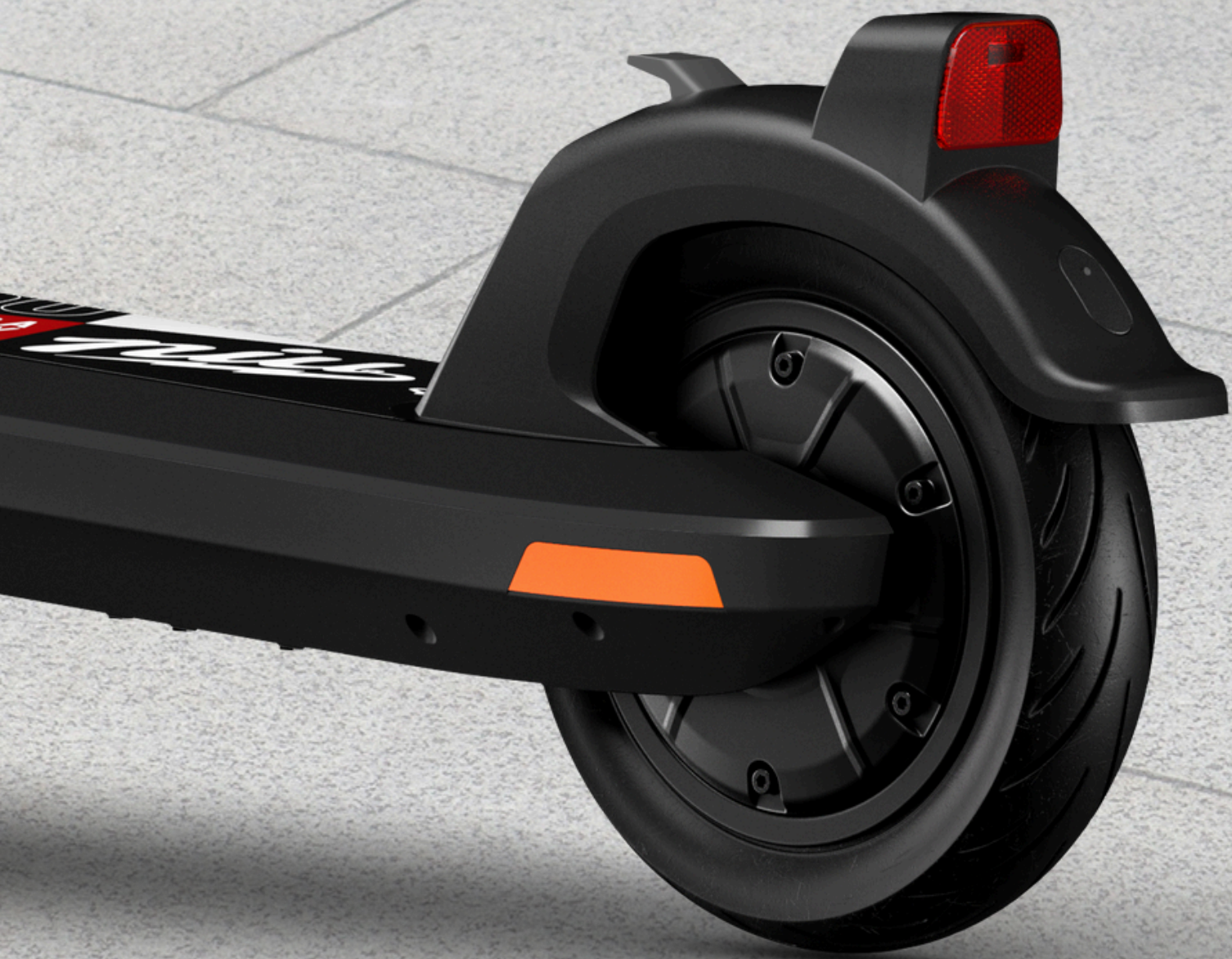


DUAL TUBE **SUSPENSION**

- Provides a smoother and more comfortable ride, minimizing bumps and vibrations on uneven surfaces.
- Improve handling, safety, and durability.
- Makes the scooter ideal for various terrains and long-distance rides

Max. Stroke: 32mm





UPGRADED MOTOR

Improve the motor power: provide more powerful acceleration and torque. It will be easy for you to keep up with others and climb hill.

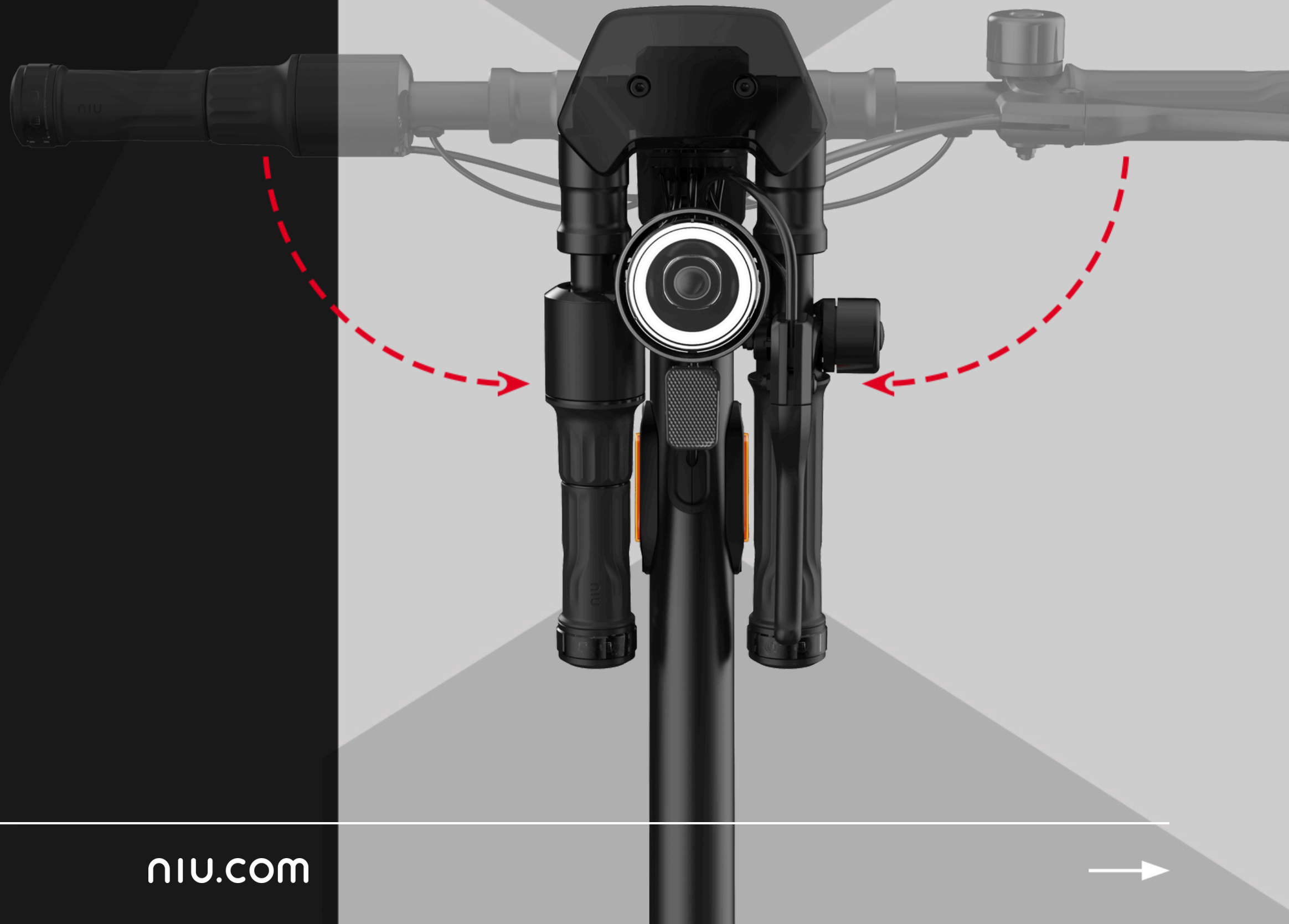
	KQi2 Pro		KQi 200 Series
Rated Power	300W	→	350W (Max. 700W)
Top Speed	28 km/h 17.4 mph	→	30 km/h 18.6 mph
Hill climb angle	15%	→	20%
Max Torque	16 Nm	→	22Nm



FOLDABLE HANDLEBAR

*Only available on KQi 200F

- With the folding handlebar, it's easy to fold and store in a car or on public transport, making it a perfect travel companion.
- Thanks to the superior manufacturing process, the foldable handlebar is precisely aligned, ensuring it remains stable and doesn't wobble while you ride the scooter.





LOW RESISTANCE TIRE

EXTENDED RANGE

Thanks to the optimized tread pattern and tire formula, the range has increased by over 10%, even with the same battery as the KQi2 Pro.

	KQi2 Pro		KQi 200 Series
Range	40 km 24.9 mi	→	54 km 33.6 mi
Tire type	Tubeless	→	Tubeless
Tire size	10 inch	→	10 inch
Battery Capacity	7.8 Ah 365Wh	→	7.8 Ah 365Wh



SLEEK DESIGN

The KQi 200 has a clean minimalist design with a drum brake engineered to fit neatly inside the front wheel, integrated wiring, and swappable griptape.



No exposed wires



Φ75mm drum brake



Swappable Griptape

BE SAFE

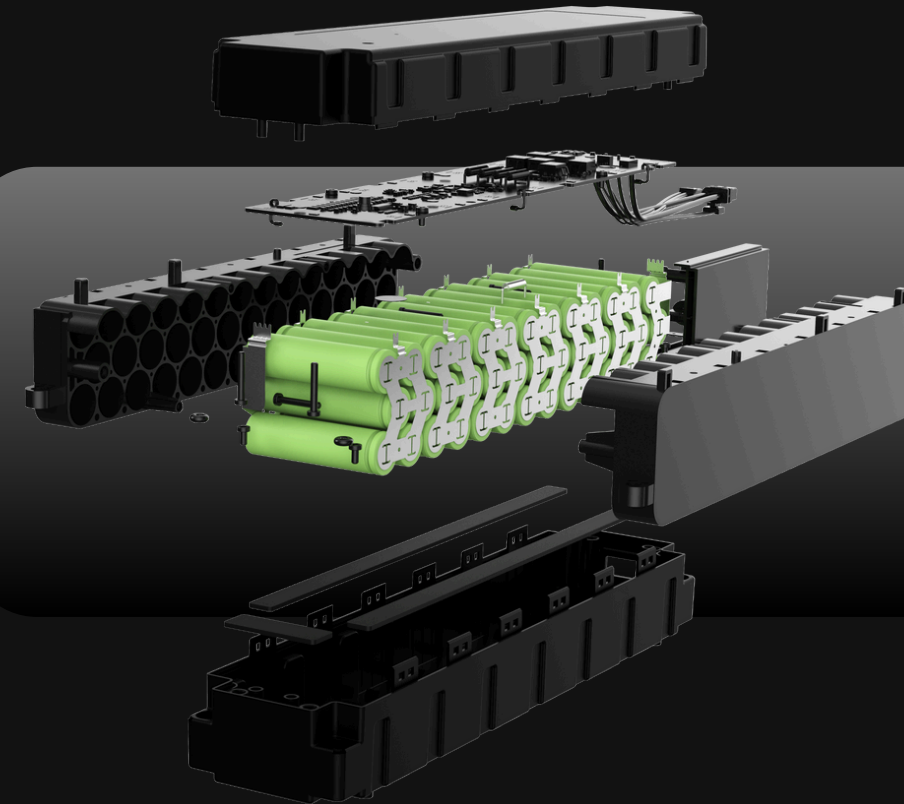
Front drum brake + Rear ebrake

Provide extremely short braking distance with excellent heat dissipation.

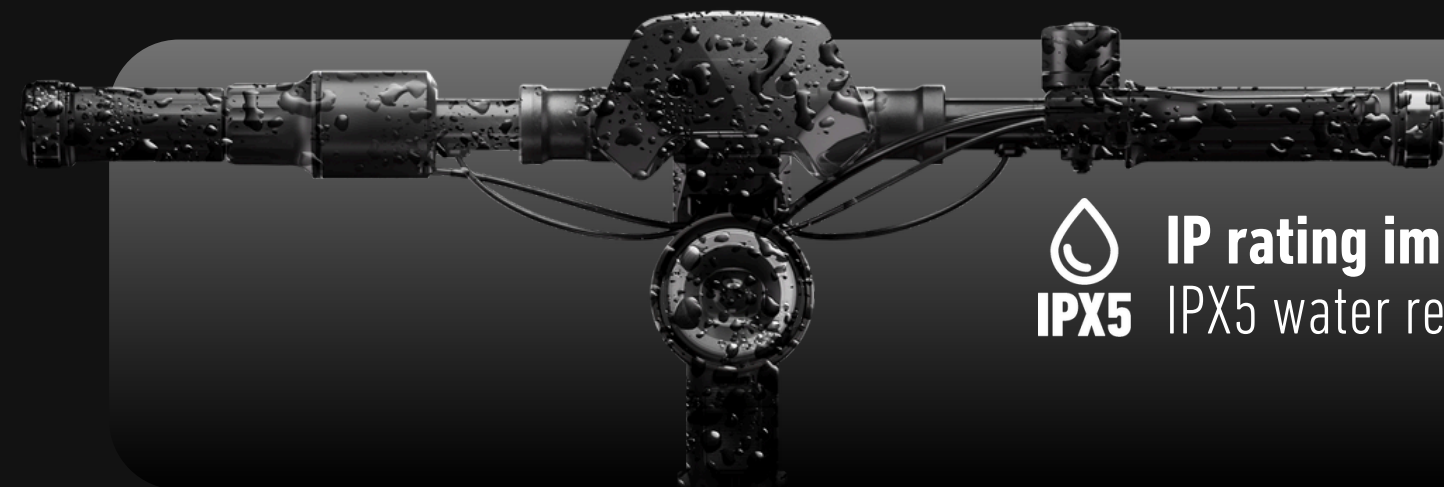


+20%

Redesign the whole frame structure with automotive grade steel
Rated load: 120kg/265 lbs



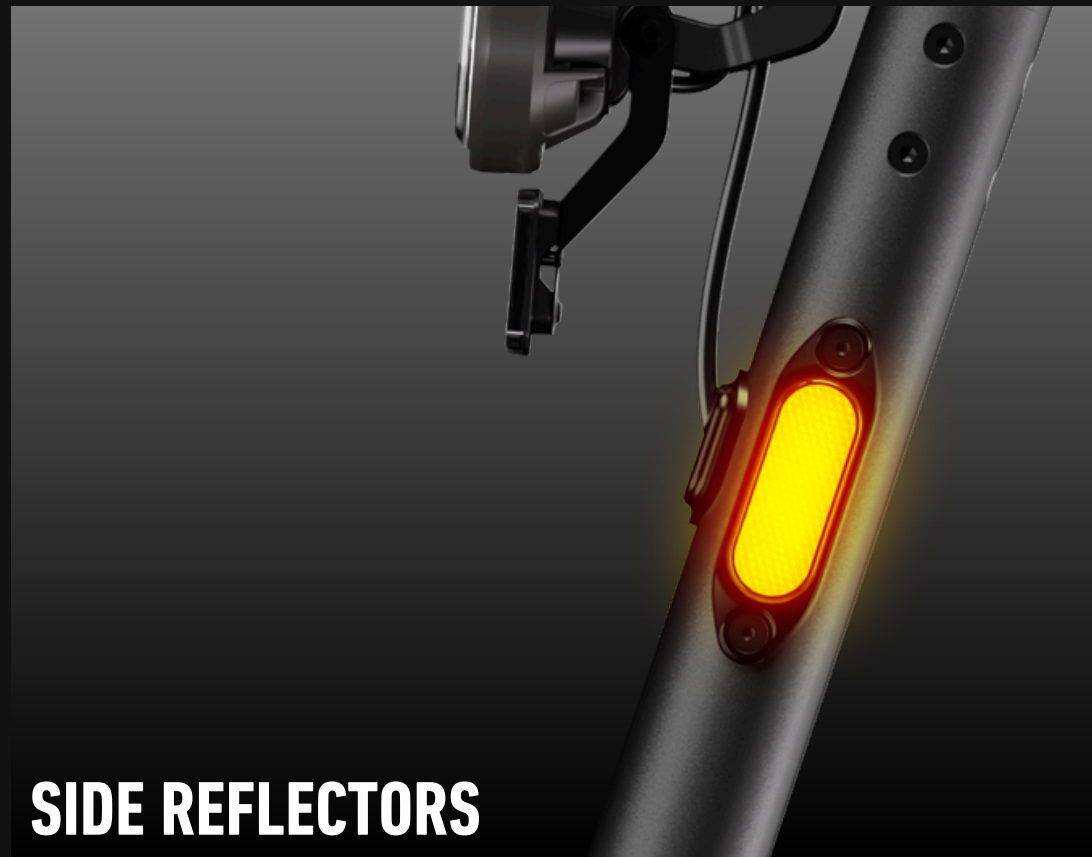
The NIU smart battery management provides 14 types of protection



 **IP rating improved**
IPX5 IPX5 water resistant

*compared to KQi2 Pro

BE SEEN



SIDE REFLECTORS



ICONIC HALO HEADLIGHT



TURN SIGNALS



BRIGHT TAIL LIGHT

MORE FEATURES



SAFE, EASY FOLDING

The folding mechanism is both safe and easy to use. Fold or unfold in just one simple motion



FOC SINE WAVE CONTROLLER

- Allow the motor to operate more efficiently
- FOC enables more accurate control of motor parameters
- Reduce noise and smooth operation of motor
- Optimize the controller structure, making heat dissipation excellent and improving the efficiency.



LED DASHBOARD

The LED digital dashboard allows you to quickly see the battery and speed information.

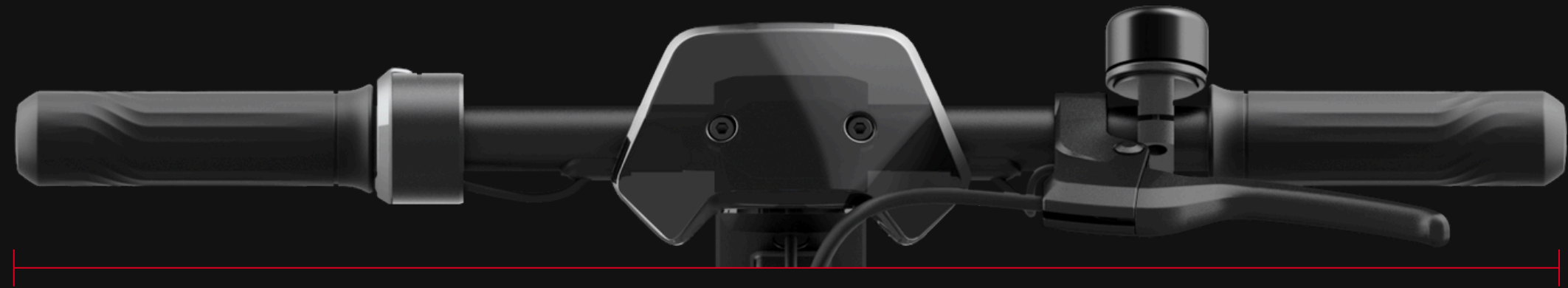
HALF TWIST THROTTLE: EXCELLENT HANDLING

- Easier to control the speed when riding on bumpy roads.
- The structure is not easy to be broken like thumb throttle.

WIDER HANDLEBAR

The KQi 200 series have been designed with wider handlebars for better stability and steering.

KQi2 Pro 520mm/20.5"



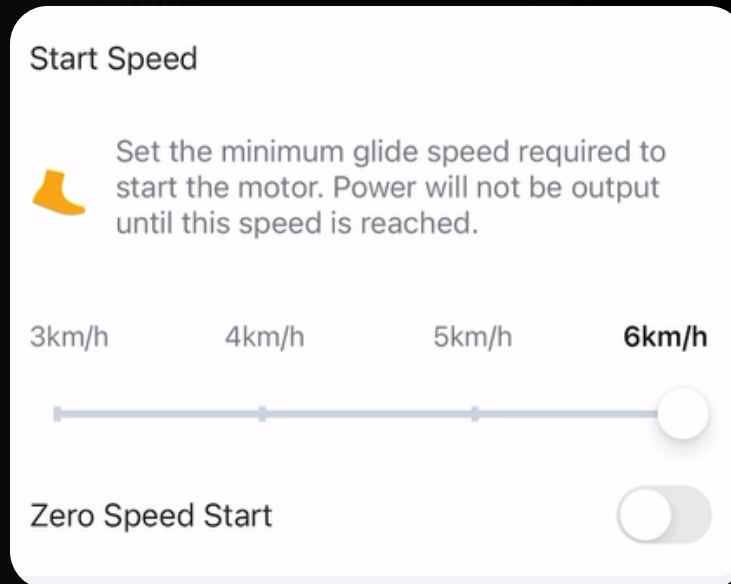
KQi 200P 541mm/21.3"



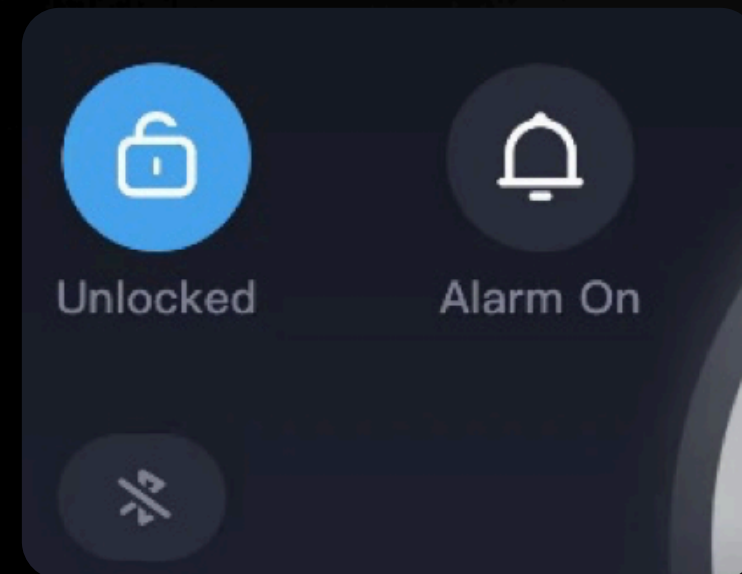
KQi 200F 607mm /23.9"



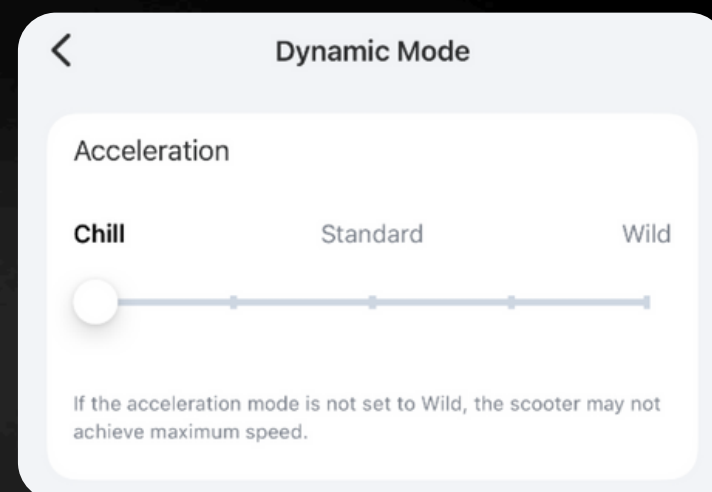
NEW APP FEATURES



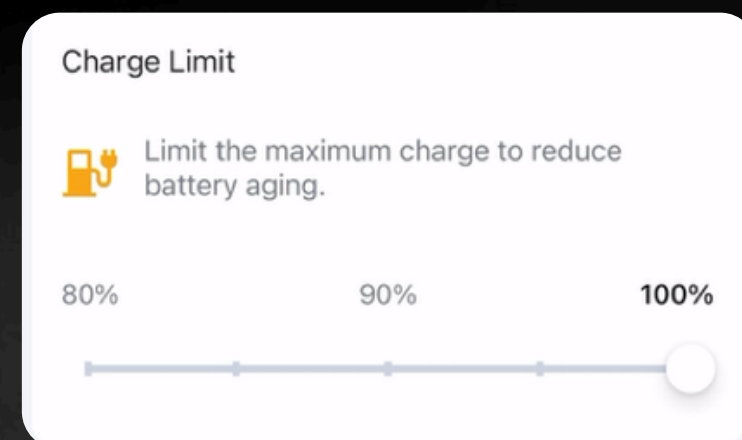
Start Speed



Alarm on/off



Acceleration Mode
Choose the mode to make the acceleration smoother



Charge Limit
Limiting charging capacity to prevent battery aging



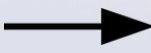
COMPETITIVE OVERVIEW

Brand	NIU	NIU	Segway	Segway
Model	KQi 200P	KQi 200F	F2	MAX G30 LP
Top Speed	30km/h (18.6mph)	30km/h (18.6mph)	30km/h (18.6mph)	30km/h (18.6mph)
Motor Power	350W	350W	350W	350W
Wheel drive	Rear	Rear	Rear	Rear
Battery Voltage	46.8V	46.8V	36V	36V
Battery Capacity	365Wh 7.8Ah	365Wh 7.8Ah	367Wh 10.2Ah	367Wh 10.2Ah
Typical Range	54km (33.6mi)	54km (33.6mi)	40km (25mi)	30km (24.2mi)
Folding Handlebar	×	√	×	×
Headlight Power	3W headlight 2W halo light	3W headlight 2W halo light	2.5W	2.5W
Turn signal	√	√	×	×
Suspension	Front dual tube spring	Front dual tube spring	×	×
Hill Climb	20%	20%	18%	20%
Brake	Front drum brake + Rear ebrake	Front drum brake + Rear ebrake	Front disc brake + Rear ebrake	Front drum brake + Rear ebrake
Weight Limit	120kg (265 lbs)	120kg (265 lbs)	120kg (265 lbs)	100kg (220 lbs)
Tire Size	10*2.3 in	10*2.3 in	10*2.3 in.	10*2.125 in.
Tire Type	Low resistance tire	Low resistance tire	Self-healing tubeless	Pneumatic inner tube
IP Rating	IPX5	IPX5	IPX5	IPX5
MSRP	\$649	\$699	\$699	\$799



MARKETS OVERVIEW

Version	US		EU		DE	
Model	KQi 200P	KQi 200F	KQi 200P	KQi 200F	KQi 200P	KQi 200F
Top Speed	30km/h(18.6mph)	30km/h(18.6mph)	25km/h(15.5mph)	25km/h(15.5mph)	20+2 km/h(12.4mph)	20+2 km/h(12.4mph)
Turn Signal	×	√	√	√	√	√
Zero Start	√ (In niu app)		×		×	
Cruise Control	√ (In niu app)		×		×	
Daylight Setting	√ (In niu app)		√ (In niu app)		×	
License Plate	×		×		√	





KQi 200P



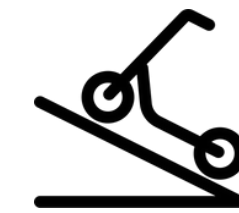
30 km/h **19** mph
TOP SPEED



54 km **33.6** mi
MAX RANGE



7.8 Ah **365** Wh
BATTERY CAPACITY



20%
HILL CLIMB



350 W
RATED POWER



700 W
MAX POWER





KQi 200F



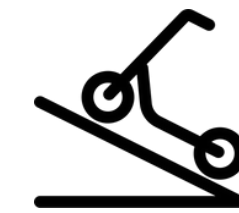
30 km/h **19** mph
TOP SPEED



54 km **33.6** mi
MAX RANGE



7.8 Ah **365** Wh
BATTERY CAPACITY



20%
HILL CLIMB



350 W
RATED POWER



700 W
MAX POWER



THANK YOU!
#MAKELIFEELECTRIC